

FOUNDATION - BASEMENT PLAN

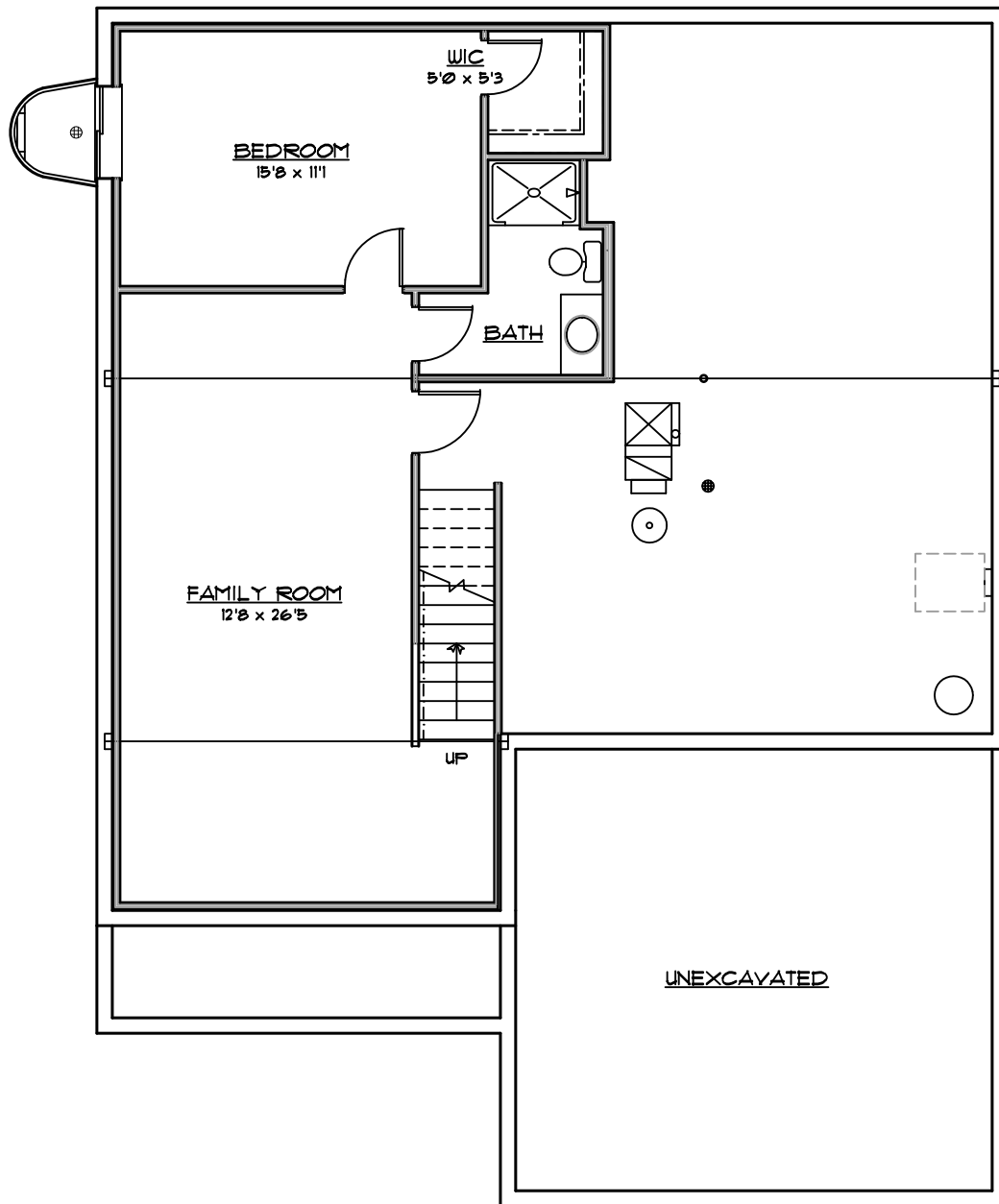
1/8" = 1'-0"

DONNA F. BOXX, Architect, P.C.



160 Marine Lane
St. Louis, Missouri 63146
(314) 434-2333

PROPOSED NEW RESIDENCE FOR
HABITAT FOR HUMANITY of ST. CHARLES
THE ENCLAVES AT EBENHOWER
ST. PETERS, MISSOURI 63376
FEB 12, 2009 / DESIGN REVIEW



FINISHED LOWER LEVEL

661 sq ft

OPTIONAL

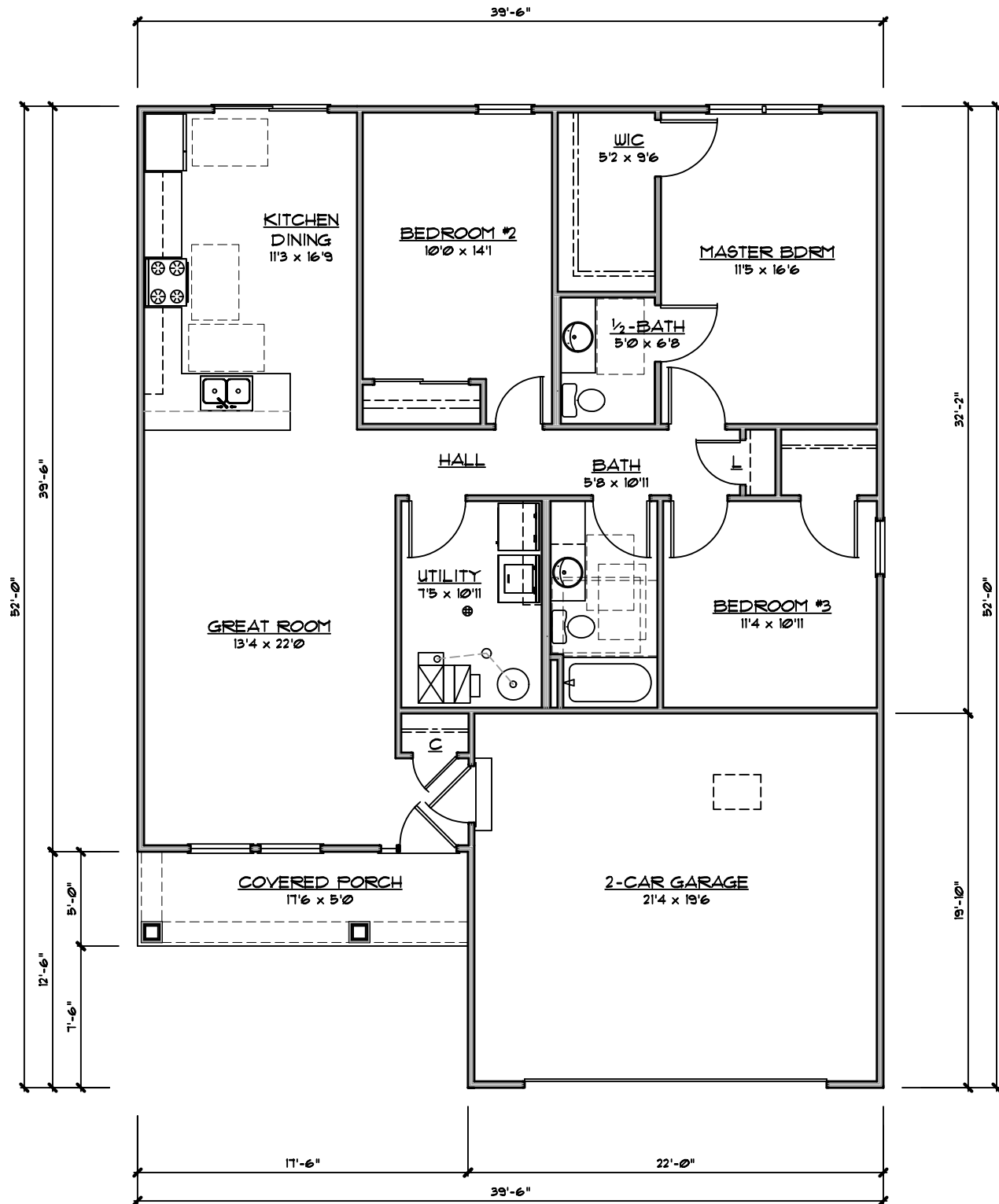
1/8" = 1'-0"

DONNA F. BOXX, Architect, P.C.



160 Marine Lane
St. Louis, Missouri 63146
(314) 434-2333

**PROPOSED NEW RESIDENCE FOR
HABITAT FOR HUMANITY of ST. CHARLES
THE ENCLAVES AT EBENHOWER
ST. PETERS, MISSOURI 63376
FEB 12, 2009 / DESIGN REVIEW**



FLOOR PLAN

1,401 SQ FT

TYPE "A" - BATH

1/8" = 1'-0"

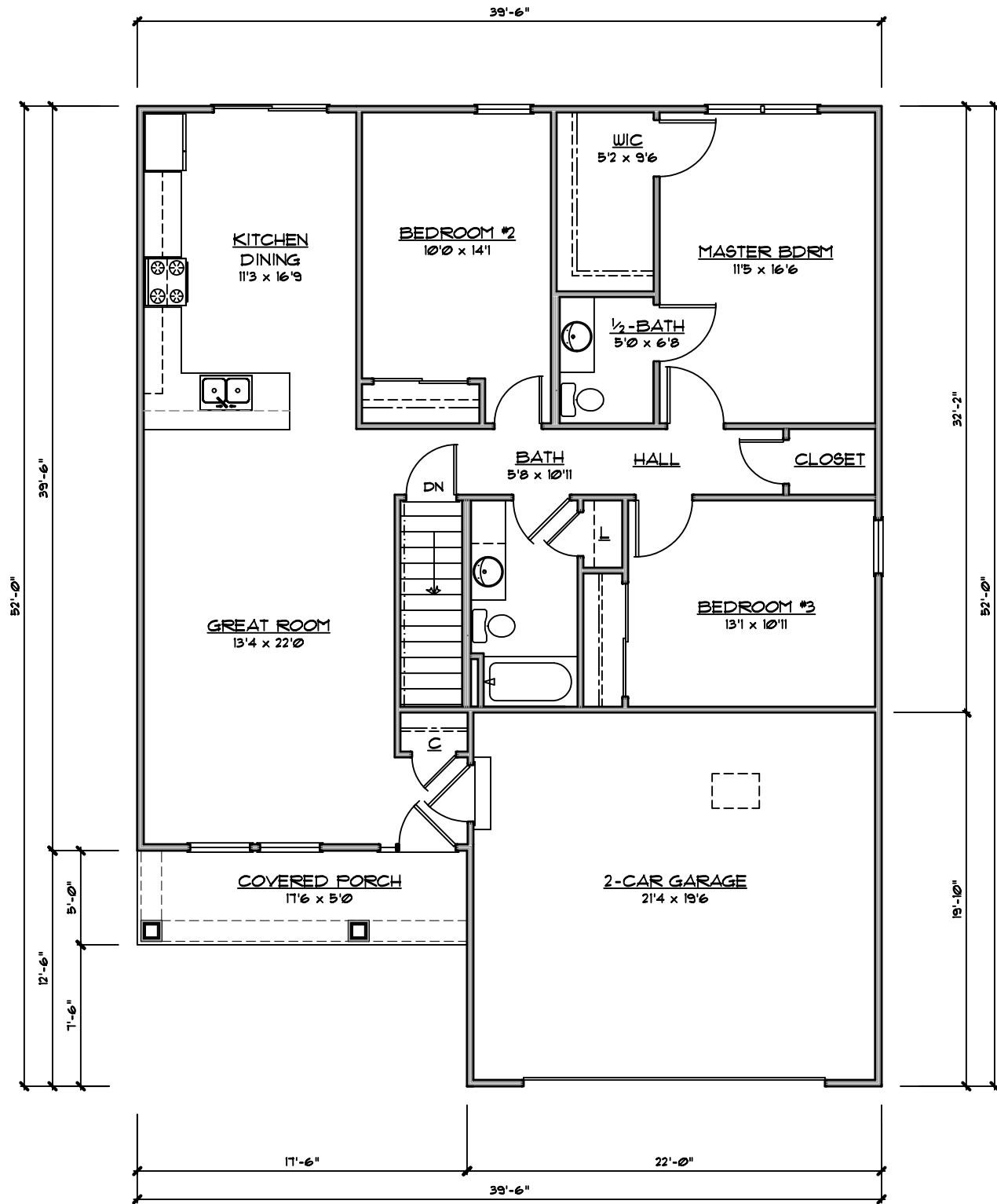
ALT. SLAB-ON-GRADE

DONNA F. BOXX, Architect, P.C.



160 Marine Lane
St. Louis, Missouri 63146
(314) 434-2333

PROPOSED NEW RESIDENCE FOR
HABITAT FOR HUMANITY of ST. CHARLES
THE ENCLAVES AT EBENHOWER
ST. PETERS, MISSOURI 63376
FEB 12, 2009 / DESIGN REVIEW



FLOOR PLAN

1,401 SQ FT

TYPE "A" - BATH

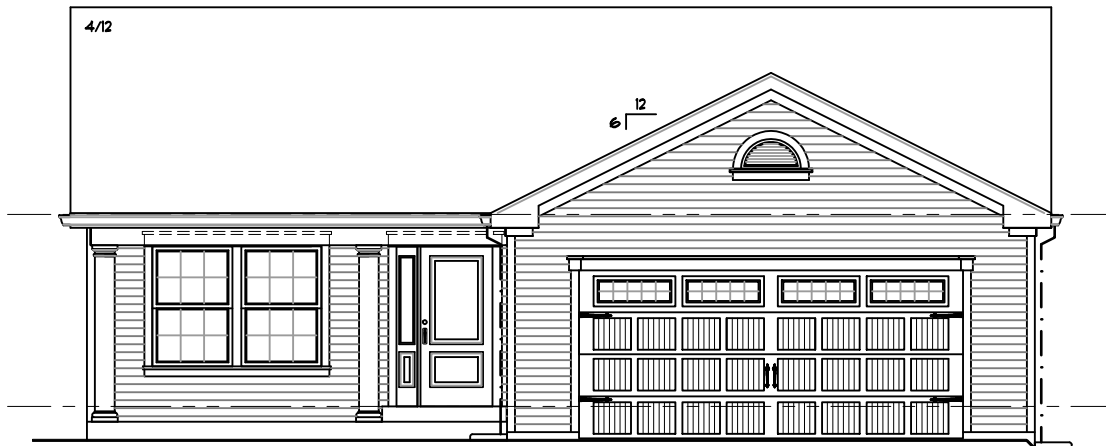
1/8" = 1'-0"

DONNA F. BOXX, Architect, P.C.



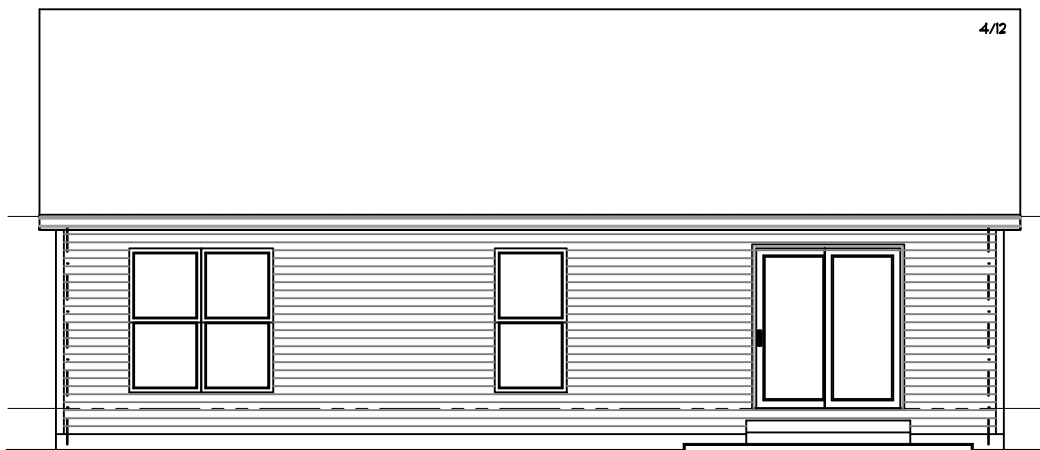
160 Marine Lane
 St. Louis, Missouri 63146
 (314) 434-2333

**PROPOSED NEW RESIDENCE FOR
 HABITAT FOR HUMANITY of ST. CHARLES
 THE ENCLAVES AT EBENHOWER
 ST. PETERS, MISSOURI 63376
 FEB 12, 2009 / DESIGN REVIEW**



FRONT ELEVATION

$1/8" = 1'-0"$



REAR ELEVATION

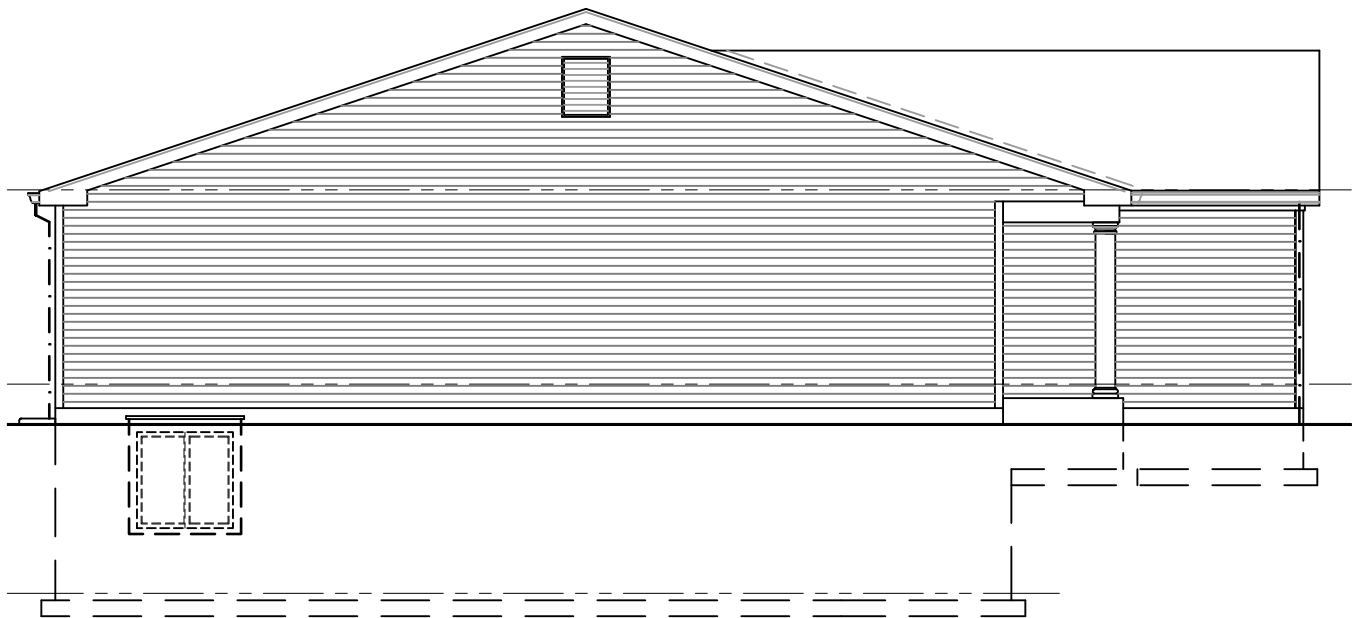
$1/8" = 1'-0"$

DONNA F. BOXX, Architect, P.C.



160 Marine Lane
St. Louis, Missouri 63146
(314) 434-2333

PROPOSED NEW RESIDENCE FOR
HABITAT FOR HUMANITY of ST. CHARLES
THE ENCLAVES AT EBENHOWER
ST. PETERS, MISSOURI 63376
FEB 12, 2009 / DESIGN REVIEW



LEFT SIDE ELEVATION

1/8" = 1'-0"



RIGHT SIDE ELEVATION

1/8" = 1'-0"

DONNA F. BOXX, Architect, P.C.



160 Marine Lane
St. Louis, Missouri 63146
(314) 434-2333

PROPOSED NEW RESIDENCE FOR
HABITAT FOR HUMANITY of ST. CHARLES
THE ENCLAVES AT EBENHOWER
ST. PETERS, MISSOURI 63376
FEB 12, 2009 / DESIGN REVIEW